

HUMBOLDT AREA SALTWATER ANGLERS

A VOICE FOR SALTWATER SPORTFISHERS

2024 SUMMER
NEWSLETTER

SEMINAR RECAP 4

GROUNDFISH UPDATE 6

EPIRB'S AND PLB'S 8

LINCOD MAKES NOISE 9

INLAND SALMON FISHING 10

OFFSHORE WIND SURVEY 11

OFFSHORE WIND UPDATE 14

EXPIRED MARINE FLARES 15

DISEASED SALMON FRY 16

KLAMATH RIVER SALMON 17

FIREFIGHTER'S TALE 18

NEW LICENSE APP 18

CA STAR TOURNAMENT 19

Represent. Advocate. Educate. Promote.

The mission of Humboldt Area Saltwater Anglers is to *represent* North Coast fishermen's historic and ongoing right to sports fish along the Northern California coast; *advocate* reasonable and rational sport fishing seasons and regulations; *educate* our members and the general public about the economic and cultural contributions of sport fishing to our local economies; and *promote* sustainable stewardship of the resource.



PO Box 6191
Eureka, CA 95502



hasa6191@gmail.com



humboldtasa.com



Follow us on
Facebook

Board of Directors

Matt Dallam

Lonnie Dollarhide

Bill Gillespie

Cliff Hart

Kent Hulbert

Tom Marking

Dan Moore

Dirk Pedersen - *Treasurer*

Ross Taylor - *Secretary*

Larry De Ridder - *Newsletter Editor*

HASA Newsletter

Thank You

All photos and articles in this issue are donated by HASA members and interested parties. HASA would like to expressly thank our friends for their time and contributions to our newsletter.

Please let our advertisers know that you are a HASA member and their support is very much appreciated.

Want to Contribute?

Send your article ideas and photos from your fishing adventures to clderidder@hotmail.com. Comments are always welcome too!

Past Newsletters

All past HASA newsletters can be viewed at humboldtasa.com.

This Issue

Issue #55. Edited by Larry De Ridder & Rachel D'Ambra.

Editor's Message

It's been a long, wet winter, but at last we're headed offshore again! In preparation for the new season, we had a terrific time at the seminar hosted by Mitch and his crew at Englund Marine, Eureka. The featured speaker was Del Stephens (albacore and tuna tactics), following presentations by Charles Loos (Bar Crossing & Safety), Travis Chambers (Engine Maintenance), and Tim Klassen (Anchoring for Halibut and Regulations Recap). Coast Guard representatives were available to answer questions during breaks. We enjoyed lots of door prizes and raffle items, helped to fund HASA, and swapped fishing stories. Photos and a write-up begin on page four.

As the ocean settles down going into summer, it will be important for any vessel with bottom fish on board to ensure they were caught inside the official 20-fathom line. Bear in mind that doesn't necessarily mean "caught in less than 20 fathoms". Possibly the easiest way to ensure that you are fishing on the proper side of that 20FM line is to go to CDFW's Groundfish page, where waypoint coordinates are included as a CSV file. Plug them into your chartplotter as one continuous route, and leave the resulting charted route visible as a series of connected line segments. Following this you should be able to instantly ID the legal fishing zone on your plotter.

Last summer was often frustrating for those of us drifting for Pacific halibut, as the drift was consistently fast. In 2023's fast drift it seemed that anchored boats routinely out-fished drifting boats. The items needed to safely anchor in 300 feet with an appropriate storage basket, anchor, rode and buoy aren't all that expensive. It has proven surprisingly easy to deploy. There are Youtube videos demonstrating the technique at <https://www.youtube.com/watch?v=YhCwxg1gGAg> and <https://www.youtube.com/watch?v=ETtVHC5YbKA>.

Regarding the offshore windmill power project, there is a lot of activity both nationally and locally. A recent news release indicates that Cal Poly Humboldt will become much more involved. The full Times Standard article is at:



<https://www.msn.com/en-us/news/other/cal-poly-humboldt-joins-offshore-wind-consortium/ar-BB1moy1q?ocid=BingNewsSearch>. On the east coast, researchers found that the intense noise generated by construction activities may cause hearing loss in whales and other marine mammals. The Marine Mammal Protection Act of 1972 makes it illegal to kill, hunt, capture or harass a marine mammal. A court could conclude that some parts of the survey and construction process constitute a violation. There are currently lawsuits filed on the East Coast addressing this issue, with no resolution expected soon.

For those of you with Optimum (formerly Suddenlink) as your internet service provider, you've likely noticed that you can't access Humboldt Tuna Club. Thus far it seems that only Optimum is blocking access, based on a report the site is unsafe. We're trying to get this resolved, but it may be that future HTC access will require Optimum customers to change their ISP, or forgo using HTC as a resource.

And finally, be sure you can recognize Coppers and Quillbacks in your catch, and release them unharmed, so our season doesn't get shut down early.



Larry De Ridder
HASA Newsletter Editor



England Marine Seminar Recap

The first-ever Eureka England Marine Saltwater Seminar was held March 30th at the new store on Waterfront Drive. The event was co-hosted by Humboldt Area Saltwater Anglers with featured speakers Charles Loos of Ocean Coach, Travis Chambers of Time and Tide, Tim Klassen of Reel Steel Sportfishing, and Del Stephens the Tuna Dog.

Attendees showed up bright and early, and by mid-morning there was standing room only. People came to the seminar from as far away as Redding, Crescent City, Shelter Cove, Fort Bragg and Klamath Falls. After the morning seminars on boating safety, engine maintenance, and anchoring for halibut, there was a break for everyone to gear up, armed with new boating knowledge.

Many attendees made new acquaintances, and old fishing buddies caught up with one other. The building was buzzing with fishing excitement and



the exchange of ideas. During the break the manager of Englund Marine, Mitch Differding, was overheard to say, “I’m happy to see such a great turnout but unfortunately one hundred chairs isn’t nearly enough. And, we’re going to need more hot dogs!” Thanks to help from HASA

volunteer Sherry Klassen and others, the free lunch was quickly consumed, just in time for the afternoon tuna seminar to begin.

The tuna seminar covered albacore and bluefin fishing tips, different gear types, and tackle which was available in the store during breaks. The door and raffle prizes provided by Del’s sponsors—Daiwa, Shimano, Garmin, Lowrance, Nomad, FatBoy Swimbaits, Westcoast Bait, and Berkley, plus local contributors B2 Squid and Valley Pacific— added suspense and excitement during breaks. All raffle proceeds went to HASA to aid them in advocating for the fishing rights of North Coast anglers, attending fisheries meetings, and disseminating information on new fishing season regulations.

During the seminar HASA was able to garner support from both old and new members from a wider geographic area than in the past. By day’s end, a lot of positive feedback was received by the HASA and Englund Marine crews. Englund Marine is looking forward to hosting future fun educational fishing seminars and we hope to see you all out on the water.



Groundfish Update

BY TOM MARKING

I've been requested to provide an update on the groundfish in our area, so I'll try to do my best since I am no longer on the Groundfish Advisory Subpanel. I do listen in on the PFMC meetings, the pre-council meeting, and the delegations meeting while the Council is in session. So I do try to keep up on what is happening and I still serve on the Management Strategy Advisory Board with the IPHC.

As you are aware, we are in a serious condition with the Quillback Rockfish having been declared overfished two years ago and we are now in a rebuilding phase. Rebuilding is estimated to take about 25 years. It is contentious whether or not this species is overfished, but the data from the California region is minimal, with most data derived from Oregon and Washington where the Northwest Science Center is located.

Data for groundfish species are generally obtained from the biennial trawl surveys, and the nearshore rockfish species are poorly represented in this survey. The southern portion of the State has an annual hook and line survey, but it doesn't extend up this far. We do have quite a bit of data from a study by Collaborative Fisheries Research up our way studying the MPA's and many ROV (remote camera) surveys, but that data was not allowed in the recent assessment by the Science Team. They are working to try to get this data entered for consideration.

A full assessment is scheduled again two years from now, so we will have to avoid Quillback so as not to shut down the fishery. Also, there are several other minor nearshore species such as Coppers, Aurora, China, and I think Treefish are a

concern. A vulnerability study was done back around 2013 that listed about 15 stocks that were a concern for potential overfishing, and I know that Quillback and Copper, then China were up at the top of the list.

So, CDFW will attempt to allow shallow fishing of less than 20 fathoms and deeper fishing over 50 fathoms as a trial run to see if we can avoid Quillback and not exceed the 1.7 metric ton overfishing limit. That is a very small amount of fish.

Release Devices:

To assist in survival of Quillback and other nearshore rockfish every angler must have and use a release device that can put a rockfish down to depth to prevent barotrauma and injury that might cause mortality. We wanted this introduced and required in regulations years ago as we foresaw this situation, but it took a catastrophe to get it into regulation. Down south, the Vermillion is under much pressure and so they have their bag limit down to two, and that is a very prevalent species in the southern area. While we catch mostly Black RF, they catch Vermillions. So, please have a device on board and use it as quickly as possible on Quillback, Coppers and China, or any other under-size fish you do not intend to keep. On a positive note the Lingcod assessment looks good and they are plentiful, so target them instead.

Pacific Halibut:

The IPHC is really concerned over the halibut surveys this past few years. It seems the surveys over the mid and northern Pacific Regions are sliding downward (except for 2A) and the Commercial guys are having a difficult time in

finding their fish for market. And the fish are much smaller, so they bring a reduced price. At present the biomass is down to what it was in around 1970, and in spite of reducing harvest the population biomass is not improving. There are several factors affecting the biomass issue: recruitment is poor, the fish are smaller, the ocean conditions have not been favorable, competition is a concern, and past by-catch mortality has a long term lingering effect. The life cycle is about 40+ years, with about 50% of the fish sexually mature about 11.7 years of age.

The Scientists think there was a fairly strong recruitment year in 2012, and that might explain why about 2020, (the covid year), we had all these really small halibut off our coast that were very plentiful. Since then they have been growing bigger and spreading out. Prior to that event the

last good recruitment cohort was back prior to the 2000's.

Of interest is that our region (the 2A area) has a strong survey result, while up north they are declining, much to their dismay. Perhaps it's because we have tighter control on by-catch reduction and little commercial effort in our area. Much of this has to do with environmental conditions, and not so much from fishing. In spite of all the studies, there are so many variables to be considered; and those variabilities cause much uncertainty with projections and life cycle.

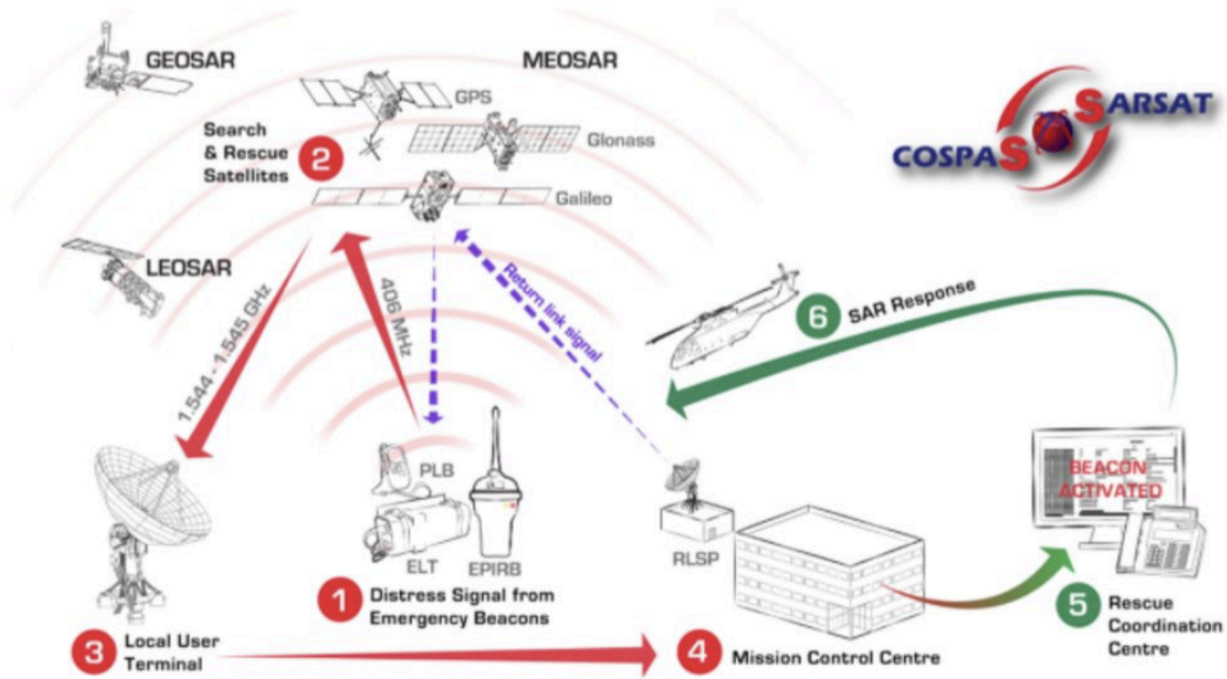
In Summary, we are fortunate to have some nearshore fishery opportunities this year, so enjoy the summer and please treat those fish to be returned to the depths with care and caution. Our future fisheries depend on those little ones growing up. Be safe out there and enjoy the summer.

\$50 OFF
your print purchase
of \$150 or more.

Valid 4/7/24-6/1/24. Exclusions apply. See associate for details.

Staples 3300 Broadway St
Eureka, CA 95501
(707)269-0196

WE ♥ PRINT
WE ♥ LOCAL



EPIRBs and PLBs

LT BLAKE THOMPSON

What are they?

EPIRBs (Emergency Position Indication Radio Beacon) and PLBs (Personal Locator Beacon) both are emergency signaling devices that transmit on the 406 MHz frequency. Each beacon transmits a unique digital code that identifies the type of beacon and any registration information attached to it. Some beacons can even transmit its current GPS position.

What happens when it's activated?

Once activated, the beacons send a signal to a satellite which then uses a land based terminal to transmit the signal to the nearest mission control center and then onto a Rescue Coordination Center. Here locally these signals go through the Coast Guard District 11 Command Center in Alameda and then immediately on to the Sector Humboldt Bay Command Center in McKinleyville to determine the best asset to

respond.

What's the difference?

EPIRBs and PLBs are similar in function. EPIRBs are typically bigger and can tend to come with more features such as providing a GPS position. Some can be activated automatically if submerged (this also means they can accidentally be activated). Most PLBs are only manually activated but are typically much smaller and can be worn on a person.

Why Should you have one?

Emergency Beacons are immediately received by a watch stander and action is taken within minutes to determine the best asset to respond. If properly registered, beacons can also provide contact info as well as vessel info critical to rescuers. This contact info can also be useful in the case of accidental activations. Most beacons also transmit a low power signal on 121.5 MHz which can be used by our aircraft to pinpoint your location once on scene saving search time. The interactions I've had

through my career with beacons, we were able to pick up their signal from 30-40 miles away and fly directly to the beacon and I've had a few cases where we had the GPS position before walking to the aircraft. Both EPIRBs and PLBs are fantastic safety devices that have proven to be extremely successful in facilitating quick rescues. Most

notably in our local area was the Barlovento rescue in 2021 where a 79' sailing vessel was taking on water 80 miles off Crescent City in 20' waves. This case began with an EPIRB signal and resulted in 6 lives saved. The rescue swimmer received a Distinguished Flying Cross, one of the highest military honors.

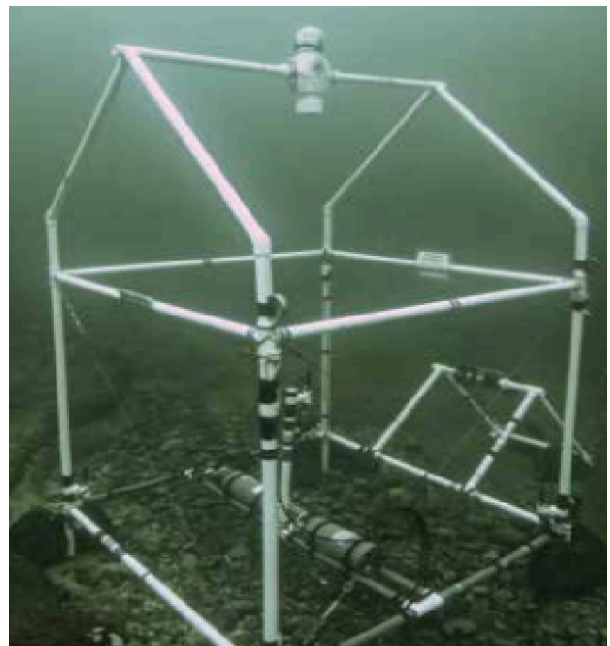


What Did That Lingcod Have to Say?

FROM AN ARTICLE BY MCKENZIE PRILLAMAN IN SCIENCE NEWS

New innovations to simplify matching underwater sounds with species in the wild may also provide crucial clues. The photo shows an easy-to-assemble audio-video array. A large version consists of an open house-shaped structure built from PVC pipes, measuring 2 meters wide, 2 meters long and 3 meters high, that fish and other critters can swim through. Six hydrophones sit at different locations, and their simultaneous recordings can help pinpoint the source of a sound produced inside the structure. Two video cameras point inward to identify the noisemaker. The devices can record two weeks of data at a time. When testing the array and two smaller versions off the coast of British Columbia,

scientists recorded the sounds of a lingcod (*Ophiodon elongatus*), a species not previously documented in research to make noises. How the fish, which doesn't have a swim bladder, produces its pulsating grunt remains unknown.



Inland Salmon Fishing Closure Is Official

CDFW NEWS RELEASE | MAY 17, 2024

The California Fish and Game Commission (Commission) voted unanimously this week to close in-river salmon sport fishing in the Klamath River Basin and Central Valley rivers for the second consecutive year.

As part of its annual process for adjusting seasons and bag limits, the Commission voted to:

- (1) Prohibit the take and possession of Chinook salmon in the Sacramento, American, Feather and Mokelumne rivers and their tributaries.
- (2) Prohibit the take and possession of fall-run Chinook salmon in the Klamath and Trinity rivers and their tributaries.

- (3) Adopt emergency closures of the spring Chinook salmon sport fishing seasons on the Klamath and Trinity rivers and their tributaries.

The regulations are expected to take effect no later than July 1st, 2024, following approval by the state Office of Administrative Law.

The in-river closures align with the recommended closure of both commercial and recreational ocean salmon fisheries off the California coast by the Pacific Fishery Management Council due to continued low abundance. Federal fisheries managers have since enacted a full closure of ocean salmon seasons in California. California's ocean salmon sport fishing seasons and regulations automatically conform to federal regulations unless the Commission acts otherwise.



Louie Micoletti with Harry Adams of Stella's Adventures Charter Service. Caught on May 10.



James Gibbs with halibut.



Upcoming Canopy Offshore Wind Offshore Wind Survey Work

RICKY ALEXANDER, FISHERIES LIAISON,
CANOPY OFFSHORE WIND FARM (RWE
OFFSHORE WIND HOLDINGS, LLC)

Canopy Offshore Wind Farm (Canopy) will be commencing geophysical surveys starting in June. The survey vessel will be a 260' class survey vessel equipped with cranes and aft/portside A-Frames. The vessel will depart from Seattle and will begin surveying offshore of Humboldt around June 20. Canopy has intentionally selected a large, high-endurance survey vessel to conduct this work to reduce the amount of weather down time

and numbers of trips to port. The vessel is expected to come into Humboldt Bay approximately every 4 weeks for crew changes. The survey schedule includes a geophysical leg (roughly 40 days, plus down time for weather) and a geotechnical leg (roughly 20 days, plus down time for weather), with a short break between survey legs for data analysis. In-water activities are expected to occur from late June through October.

For the first leg of the survey, the vessel will be deploying an autonomous underwater vehicle (AUV), which is an untethered, torpedo-shaped vessels equipped with various instruments that measure a range of variables, but most importantly uses sound to map the contours and

density of the seafloor. On the geophysical leg, the AUV will cruise approximately 40 meters (about 22 fathoms) above the seafloor. The AUV will also be equipped with a camera that will be used to further investigate areas with dense (aka hard bottom) returns from the acoustic survey.

Following the geophysical survey, the vessel will return to port in Eureka, then a benthic subject matter expert (SME) and marine archeologist will review the data to identify areas of importance, such as shipwrecks, culturally/historically important sites, hard bottom, and corals. These areas will be avoided for geotechnical survey efforts, which physically interact with the seafloor.

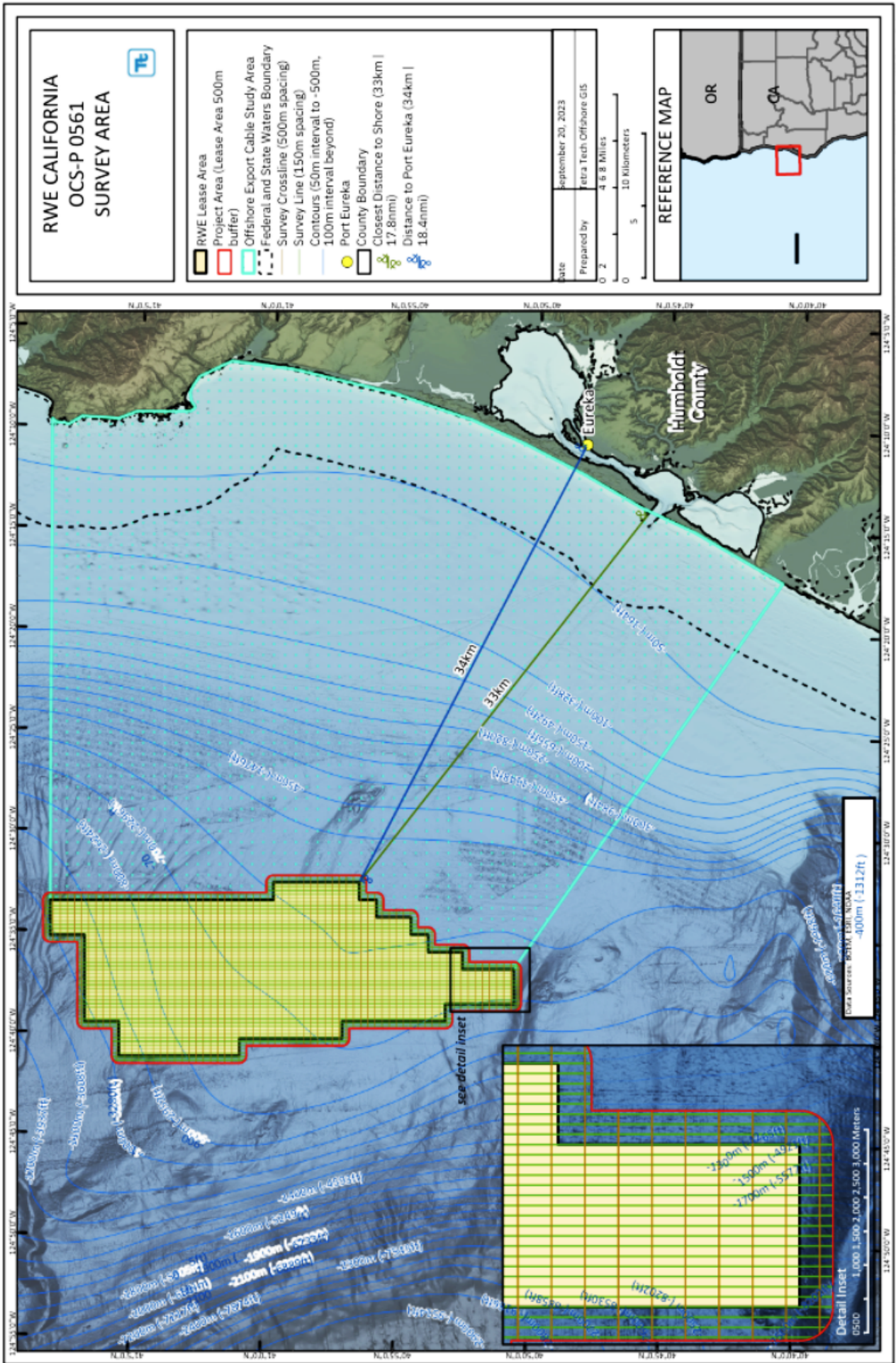
The vessel will be operating primarily within the lease area, running north/south and east/west transects (see map above for location of transect lines). Two additional nominal investigative routes (location to be determined) will be surveyed running from the lease area shoreward to the 50-fathom contour to understand geophysical conditions inshore of the lease. The blue and green lines inshore of the lease area on the *chart are only measurement lines indicating distance to shore, and are not the intended survey lines; potential export cable corridor routes have not been determined at this time. Survey activities (i.e. deploying survey equipment) will not take place in state waters in 2024, though the vessel may occasionally transit to/from Humboldt Bay

for crew/equipment changes. The vessel operators have been briefed on relevant local events (including dates) that will result in spikes of Bay activity, including recreational fishing activities. The vessel operators will make every effort to coordinate with local mariners and avoid transiting to/from the Bay during high-traffic periods. Canopy is cognizant of inshore fishing and mariner activities (fishing activity/recreational vessels/sailboat races) and will time inshore survey efforts accordingly. The survey vessel will have an Onboard Fisheries Liaison and will monitor VHF 16.

Following the review of the geophysical data, the vessel will return to the lease area and begin geotechnical survey efforts. This survey is intended to better understand the structure of the seafloor, including compaction, density, biodiversity of the sediment, and grain size. When conducting geotechnical operations, the survey vessel will be stationary within a watch circle and will request mariners to maintain a 0.5 NM Closest Point of Approach (CPA). Canopy's shoreside fisheries liaison is available to answer questions anytime and can be reached by email at ricky.alexander@rwe.com or by call or text at 312-504-9085.

For more information, please visit www.canopyoffshorewind.com. Thanks for reading, and tight lines!

**See chart on the following page.*



Updates From Offshore Wind Developers

BY LUCIA ORDONEZ OF VINEYARD OFFSHORE

Vineyard Offshore and RWE hold lease areas off the coast of Humboldt Bay for development of offshore wind projects. Because of water depth, these projects, like those slated for lease areas off Morro Bay on the Central Coast, will need to employ floating wind turbine technology – the first in the United States. We know that our projects cannot be successful unless we are good neighbors, onshore and offshore. The Fisheries Communication Plan for both Vineyard Offshore and RWE can be found here:

https://assets-global.website-files.com/6453f12a83b4a3bb1a7071a7/65c14ec1e893f56f62f291da_RWE%20Vineyard%20Offshore_Joint%20FCP_Final%20Revisions_1-29-24_508.pdf

Vineyard Offshore plans to start monthly Office Hours, to be held at their office in the Carson Block Building, 517 3rd St., Suite #3, Eureka, CA, from 11am to 2pm. Upcoming dates: June 5th

and July 17th.

Additionally, Fisheries Liaisons from both developers will be holding traveling Port Hours, where Liaisons will be available at the various North Coast Harbors with lease area charts and other materials to answer questions from the fishing community. The first two will be held Wednesday June 5th, at the Eureka Harbor docks from 8am-10am, and Crescent City outside the Harbor Office from 12pm-2pm.

Vineyard Offshore is also pleased to announce the availability of joint developer sponsored scholarships for the upcoming Humboldt Region Captain's License Program by Maritime Institute, being held June 17th-28th. Limited spaces available, please call (866) 300-5984 for more information.

Catch us this summer where we are proudly sponsoring some of Humboldt's favorite events, like the Oyster Festival, on June 16th, or the 80th Anniversary Crabs game, on July 17th.



Jim Bingham with a vermillion, fishing with Crescent City Sportfishing Charter



Tom Beers with some lingcod, fishing with Crescent City Sportfishing Charter

Why Are Expired Marine Flares an Issue in Our State?

FROM CALIFORNIA DEPARTMENT OF BOATING AND WATERWAYS

Expired marine flares are hazardous wastes, are transported as explosives and must be disposed of at a hazardous waste facility permitted by the EPA to manage explosives. State laws prohibit the disposal of hazardous waste in waterways, trash, and in municipal landfills. An estimated 174,000 outdated flares are generated each year by recreational vessels in California. With this large number of unneeded flares generated annually in California, there is a strong need for public education and awareness about proper disposal as well as good disposal options.

Currently there are no permitted facilities in California that can accept, treat and/or dispose of non-military explosives waste streams. There are only three permitted facilities in the U.S. that accept and treat/dispose of explosive waste streams, like pyrotechnic marine flares (two facilities treat in incinerators (UT and LA), the other does open burning (MO)). The packaging, disposal and transportation costs involved with safe disposal of these explosive waste streams are a huge cost burden for the public and governmental agencies. It costs approximately \$7 to \$50 per flare to be properly disposed of at an out-of-state permitted facility.

What are the current disposal options for expired marine flares?

Some counties pursue grants from CalRecycle to conduct temporary marine flare collection events--typically, only recreational boaters who are residents or who keep their boat in that grantee county can participate in those events. For disposal of expired marine flares, please contact the California Department of Toxic Substances

Control (800-728-6942) or your local Certified Unified Program Agency (<https://cersapps.calepa.ca.gov/public/directory/>) for assistance. Recreational boaters can contact their local Household Hazardous Waste program for options. Commercial boaters and organizations can contact a competent hazardous waste management contractor for services.

Recommended best practices for marine pyrotechnic flares disposal.

Never put flares in the regular trash or in any waterway, it is illegal and can endanger solid waste workers or our waterways.

Do not discharge expired marine flares during civic fireworks festivities or any event. Firing a flare in a non-emergency is considered a false distress message—it is a federal crime and is treated seriously by law enforcement. U.S. Code Title 14, section 88 provides that an individual who knowingly and willfully communicates a false distress message to the Coast Guard or causes the Coast Guard to attempt to save lives and property when no help is needed is guilty of a Class D federal felony (subject to up to six years in federal prison, up to \$250,000 in fines and reimbursement of all costs the Coast Guard incurs as a result of the false distress signal or call). In addition, misuse of marine flares can cause serious injuries and can be a fire hazard. Encourage your county to conduct a collection event for recreational boaters. Purchase a USCG approved electronic visual distress signal to replace old pyrotechnic flares. Electronic visual distress signal are reusable alternatives that do not release chemicals when used, do not expire, and are safe to use. Stay informed about legal methods for disposal of hazardous waste and tell other recreational boaters when safe marine flare disposal becomes available. Your marina or yacht club should be able to provide you with that information.

Fall-Run Chinook Salmon Fry Succumb to Gas Bubble Disease in Klamath River

CDFW PRESS RELEASE | MARCH 2, 2024

The California Department of Fish and Wildlife (CDFW) announced March 2nd that fall-run Chinook salmon fry released for the first time from its Fall Creek Fish Hatchery in Siskiyou County are presumed to have succumbed to gas bubble disease in the Klamath River.

On Monday, Feb. 26th, CDFW released approximately 830,000 fall-run Chinook salmon fry into Fall Creek, a tributary of the Klamath River above Iron Gate Dam. The fish were hatched at CDFW's new, \$35 million, state-of-the-art Fall Creek Fish Hatchery, which represents California's long-term commitment to supporting and restoring both Chinook and coho salmon runs on an undammed Klamath River.

The salmon fry experienced a large mortality based on monitoring data downstream. Indications are that the cause of mortality is gas bubble disease that likely occurred as the fry migrated through the Iron Gate Dam tunnel, old infrastructure that is targeted for removal along with the Iron Gate Dam itself later this year. Gas bubble disease results from environmental or physical trauma often associated with severe pressure change.

There is no indication the mortality is associated

with other Klamath River water quality conditions such as turbidity and dissolved oxygen, which were reading at suitable levels on Feb. 26th and the days prior to release. The visual appearance of the dead fry detected by monitoring equipment points to gas bubble disease. Monitoring equipment documented other healthy yearling coho and Chinook salmon that came from downstream of the dam.

The problems associated with the Iron Gate Dam tunnel are temporary and yet another sad reminder of how the Klamath River dams have harmed salmon runs for generations. CDFW will plan all future salmon releases below Iron Gate Dam until this infrastructure is removed. Poor habitat conditions caused by the dams and other circumstances such as this are reasons why CDFW conducts releases of hatchery fish at various life stages.

CDFW's Fall Creek Fish Hatchery continues to hold approximately 3.27 million healthy, fall-run Chinook salmon. Additional releases are planned later in the month.

The annual fall-run Chinook salmon production goal for the hatchery is to raise and release 3.25 million fish – 1.25 million released as fry, 1.75 million as smolts, and 250,000 as yearlings. The additional stock of fall-run Chinook salmon remaining in the hatchery exceeds the annual production goal and will help offset losses experienced with the initial release of fry.



Now located at:

**2535 Harrison Ave.
Eureka**

CDFW Releases 500,000 Juvenile Salmon into Klamath River

CDFW NEWS RELEASE | APRIL 18, 2024

The California Department of Fish and Wildlife (CDFW) this week successfully released approximately 500,000 juvenile salmon into the Klamath River just below the Iron Gate Dam.

On Tuesday, April 16th, joined by leaders from the Karuk, Yurok, Shasta Indian Nation and the Quartz Valley Indian tribes, CDFW released about 90,000 yearling coho salmon. It was the first major release of coho salmon, a state and federally listed threatened species, into the Klamath River since dam removal began in earnest late last year. The fish were trucked about 7 miles from CDFW's new, state-of-the-art Fall Creek Fish Hatchery in Siskiyou County and released following remarks and a Tribal blessing.

The following day, April 17, CDFW released more than 400,000 fall-run Chinook salmon fry from the same location below Iron Gate.

The coho and Chinook salmon released this week are expected to return to an undammed Klamath River in two to four years after life in the Pacific Ocean with access to hundreds of miles of new spawning and rearing habitat as a result of dam removal.

River conditions were reportedly ideal for the salmon releases with water temperatures at 51 degrees, high dissolved oxygen levels and low turbidity. In the two weeks prior to release, CDFW further tested river conditions by placing "sentinel" juvenile salmon in holding enclosures for 48 hours at various locations in the Klamath River. All 200 salmon in the sentinel study survived showing no ill effects from their time in the river.

Later this spring, CDFW will release about 1.75 million fall-run Chinook salmon smolts into the river. CDFW varies the ages of the fish and release strategies to improve survival. All future salmon releases will take place below Iron Gate until dam removal is complete. The Iron Gate Dam is scheduled for removal later this year.



A Firefighter's Tale

FORWARDED BY MITCH DIFFERDING -
AS TOLD BY CHARLES LOOS
(charles@theoceancoach.com)

After my Navigation seminar at the Salt Water Sportsman's show, a firefighter told me a story. When his fire crew is done fighting a forest fire, they radio for a helicopter pickup. But the helicopter often misses the pickup spot, and lands somewhere else far away.

My seminar had focused on the three different formats for latitude/longitude. The light bulb went on in the fire fighter's head, and for the first time he realized the reason the chopper was missing the pickup spot is that the firefighters and the pilot were using different formats for latitude and longitude!

This is a real-life example of the danger of confusing the three formats. Imagine if you're calling Mayday on the radio and you mess up the format. The Coast Guard will go looking for you in the wrong place! Or imagine a friend texts you a lingcod spot, as in the following example:

"Hi, Mike, I found a great lingcod spot at 45.13.29 and 124.02.51. It's a small spot, so you have to get right on it. Good luck tomorrow!"

Could you find that spot? The answer is no, since the double decimal point is nonsensical, and it's not clear whether it means 45° 13.29' or 45° 13' 29". They are not the same location!

Here is an example of one location shown in the three formats. As mariners, we should use the format marked with the asterisk.

*Preferably use the degrees and decimal minutes like this: 32° 44.25'

Another format is degrees/minutes/seconds like this: 32° 44' 15"

A final format is decimal degrees like this: 32.738°

Confused? You're in good company. About 50% of captains don't understand this. It's serious business, and you'll struggle with navigation until you master it.

CDFW Introduces License Application for Mobile Devices

NEWS RELEASE FROM CDFW

The California Department of Fish and Wildlife (CDFW) is pleased to announce the launch of the CDFW License App for mobile devices. The new application allows residents and non-residents to display California sport fishing licenses and validations on their mobile phones and other mobile devices in lieu of a physical license. Users may also download and view various CDFW online resources, including hunting and fishing regulations booklets, the Fish Planting Schedule and access the Online License Sales and Services

website.

Users can download the application on their mobile devices through the Apple App Store or Google Play Store or by accessing the direct download links from CDFW's License App web page. Following the successful rollout of the CDFW License App, hunting licenses and related hunting validations will be added to the mobile display options as early as mid-2024.

Nathaniel Arnold, acting chief of CDFW's Law Enforcement Division, said, "Wildlife officers expect the app will provide additional opportunities for the angling public to have their

licenses conveniently in possession when checked.”

The rollout of the CDFW Licensing App aligns with the goals of CDFW’s R3 initiative to transform hunting and fishing barriers into opportunities. This app will allow California anglers to easily obtain, access and display their sport fishing licenses on their mobile devices,

providing a convenient and paperless solution that promotes responsible fishing practices, ensures compliance with regulations, and enhances overall fishing experiences for individuals in both urban and remote areas.

More information about the app and Frequently Asked Questions can be found on the CDFW’s License App web page, which includes video tutorials covering the app’s various functionalities.

What Is The CCA California STAR Tournament?

CCA California’s summer-long STAR Tournament kicks off on Saturday, May 25th, 2024 and runs through September 2th, 2024. It’s open to party boat, private boat, and shore anglers alike!

Registration is just \$40 for current CCA members. Non-members can participate by joining CCA, and then registering for the STAR Tournament. All entries include a durable measuring device and access to the Fishing Chaos app.

For full Tournament rules, go to ccacalifornia.org/star.

Eligible fish include:

Saltwater Bass: Sand Bass, Calico Bass, Spotted Bay Bass (18 inches)
California Halibut (28 inches)
Yellowtail (36 inches)
White Seabass (36 inches)
Tuna: Bluefin, Yellowfin, Big Eye, Albacore (36 inches)

What Prizes Can You Win?

- Prize #1: 2024 18’ Parker Center Console 18SE with 150 HP Yamaha Outboard, and Trailer
- Prize #2: Trip for 2 to Alaska OR Mag Bay with Pacific Sportfishing Alliance
- Prize #3: 4-Day Trip to Cedros Island with Casa de Cedros
- Prize #4: Guided Fly Fishing Trip for 2 in Sitka, Alaska with Sitka Fish
- Prize #5: Trip for 2 to La Paz with Tailhunter International
- Prize #6: 1-week Stay in Costa Rica with Fishing Nosara
- Prize #7: 3-Day Trip on the Intrepid out of Point Loma Sportfishing
- Prize #8: Premium Prize Pack from Costa Sunglasses
- Prize #9: Tern Link D8 Electric Bike from Tern Bikes
- Prize #10: NK180 Electric Motor from Newport Vessels

Discover all the details and join the tournament at ccacalifornia.org.

Celebrating 80 Years 1944-2024

Englund
MARINE & INDUSTRIAL SUPPLY
**2024 DOCK
SALE**

DON'T MISS THESE SALES!

June 14th & 15th
Fri 8:00-5:30 / Sat 8:00-3:00

590 W. Waterfront Dr., Eureka
707-444-9266

June 28th & 29th
Fri 7:00-5:00 / Sat 7:00-3:00

191 Citizens Dock Rd., Crescent City
707-464-3230

Tackle - Rod & Reels - Crab Pots - Coolers - Kill Bags - Rod Holders - Rain Gear - Hoodies
Shirts - Outdoor Gear - Boots & Shoes - Electronics - PFD's - Safety Equipment
Boat Maintenance - Marine Accessories - And More!



www.englundmarine.com